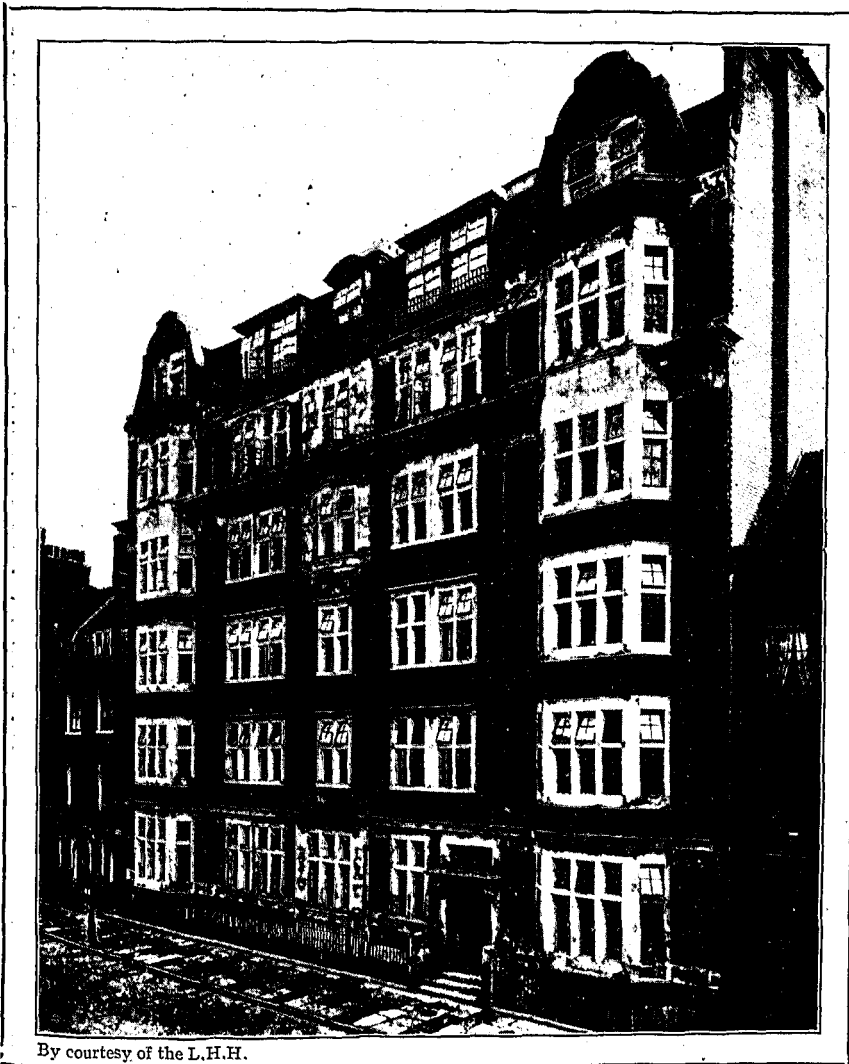


THE HOSPITAL WORLD.

OPENING OF THE EXTENSION OF THE NURSES' HOME AT THE LONDON HOMŒOPATHIC HOSPITAL.

Wednesday, May 20th, will long be remembered at the London Homœopathic Hospital, Great Ormond Street, W.C., as a Red Letter Day, for it was the occasion on which it was honoured by a visit from Their Royal Highnesses the Duke and Duchess of York, when the Duchess opened the extension to the Nurses' Home, and received purses towards the completion of the extension fund of £13,829.



By courtesy of the L.H.H.

THE NURSES' HOME, LONDON HOMŒOPATHIC HOSPITAL.

The guests assembled in the King Edward Ward, the platform of which was beautifully decorated with a background of beech leaves, and lovely orange coloured plants and flowers sent up from the country by the Earl of Donoughmore, K.P., Treasurer of the Hospital. During the waiting time a selection of music was admirably rendered by Miss Rosabel Watson's Orchestra.

The Duchess on her arrival was received by H.R.H. the Duke of York in his capacity of President of the Hospital, and representatives from the Vice-Presidents, Mr. Edward Clifton Brown, Chairman of the Board of Management, and Mr. H. H. Turner, Vice-Chairman, representatives

of the Board, representatives of the Council of the Ladies Guild; Dr. John Weir, Senior Physician, Mr. James Eadie, Senior Surgeon, Dr. Hall Smith, Chairman of the Medical Committee, the Mayor of Holborn (Councillor Percy Hill, C.C., J.P.), Prof. Beresford Pite the Architect, Miss Clara Robinson, R.R.C., Matron, and Major Edward A. Attwood, Secretary.

After these presentations had been made, and a lovely bouquet presented to Her Royal Highness by Staff Nurse Vanstone, the company proceeded to the King Edward VII ward where an address was read to Her Royal Highness by the Chairman of the Board of Management, Mr.

Edward Clifton Brown, on behalf of the President, Chairman, and Members of the Medical Staff, who stated in its course:—

"It has fallen to the lot of the present Board of Management to be the governing body at a time in the history of the Hospital when the existing accommodation has again proved to be inadequate for its needs.

With the approval and financial support of King Edward's Hospital Fund for London, the Board have enlarged the Nurses' Home to provide these additional beds, and have also commenced a new Contributing Ward Unit, a Children's Admission Ward Unit, new enlarged quarters for our X-Ray Department, and considerable extensions to the Laboratory. This will increase our total bed complement to over 200, but at an additional estimated cost of £15,000.

The cost of the first part of our Extension Programme, the Nurses' Home Extension, has been £13,839, of which a sum of £10,713 had been raised, leaving a balance of £3,126 required to complete it. On hearing of this position, Lord Dysart, an ever-ready benefactor of the Hospital, set a splendid example by promising the last £1,000 providing the whole of the balance was raised, and I am happy to state that by your Royal Patronage to-day we have achieved our object and claimed this munificent reward. Your Royal Highness will also share our gratification at the knowledge that we have succeeded in securing the endowment of the Princess Elizabeth Cot by the Paramount Philanthropic Society, who have by their generous action materially assisted the fulfilment of our aim. We are also indebted to the Matron, Sisters and Nurses of the Hospital who have collected over one hundred guineas." (Applause).

At the conclusion of the address Lord Stanley of Alderley invited the Duchess to declare the Nurses' Extension to be open, and Her Royal Highness responded:—

"I have very much pleasure in declaring the Extension of the Nurses' Home open."

It was then dedicated by the Bishop of Stepney.

Presentation of Purses.

Lord Stanley of Alderley requested the Duchess to receive purses towards the Extension Fund and there followed a pretty ceremony of little children, one or two so small as to be in the arms of their nurses, presenting purses to Her

[previous page](#)

[next page](#)